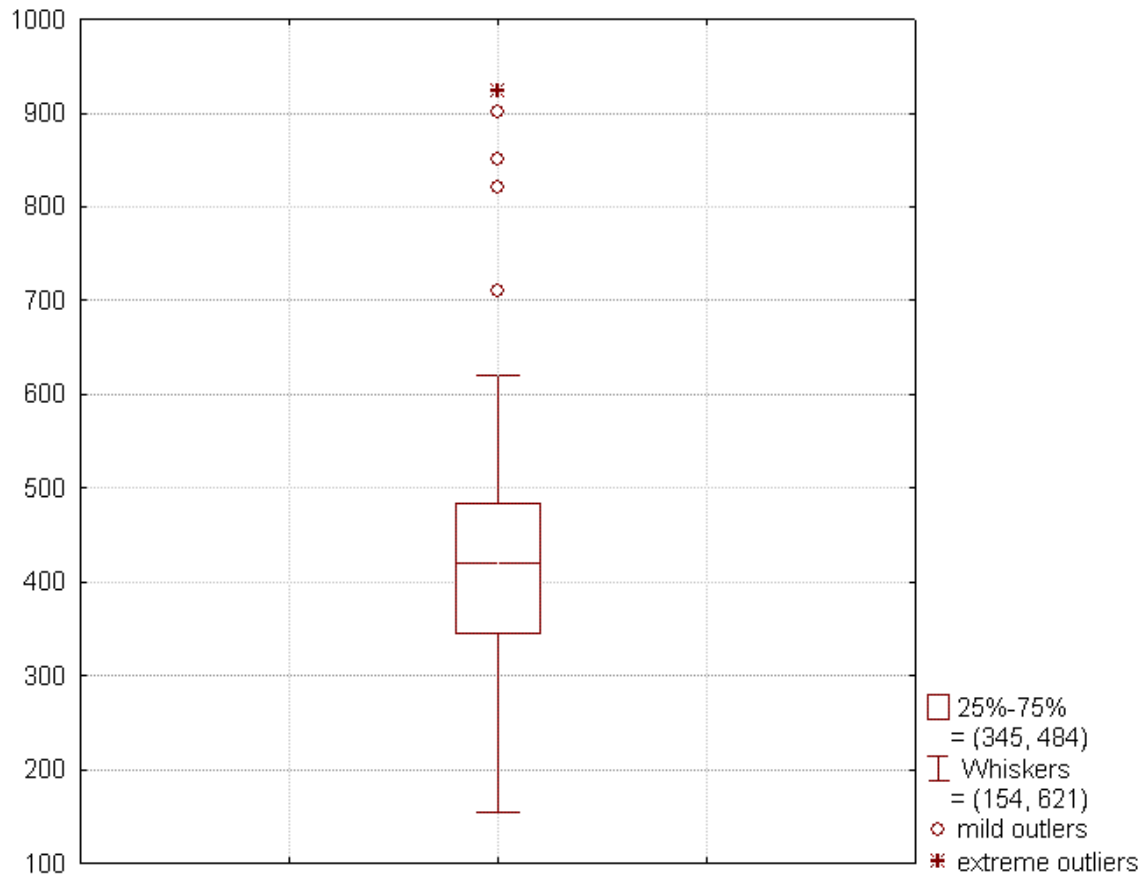


Box Plot (aka box-and-whisker diagram)



For this data set:

- Smallest non-outlier observation = 154
- Lower quartile $Q_1 = 345$
- Median $Q_2 = 420$
- Upper quartile $Q_3 = 484$
- Interquartile range $IQR = Q_3 - Q_1 = 484 - 345 = 139$
- Largest non-outlier observation = 621
- Mild outliers (o) are between $1.5 * IQR$ and $3 * IQR$ above Q_3 or from 692.5 to 901
- Extreme outliers (*) are above $Q_3 + 3 * IQR = 901$
- The data is skewed to the right (positively skewed)

References

http://en.wikipedia.org/wiki/Box_plot

Exploratory Data Analysis, John W. Tukey, Addison-Wesley, Reading, MA 1977